

PART OF THE NW.1/4, OF SECTION 31, T.7N., R.1W., S.L.B. & M.

458

# WILDCAT SUBDIVISION

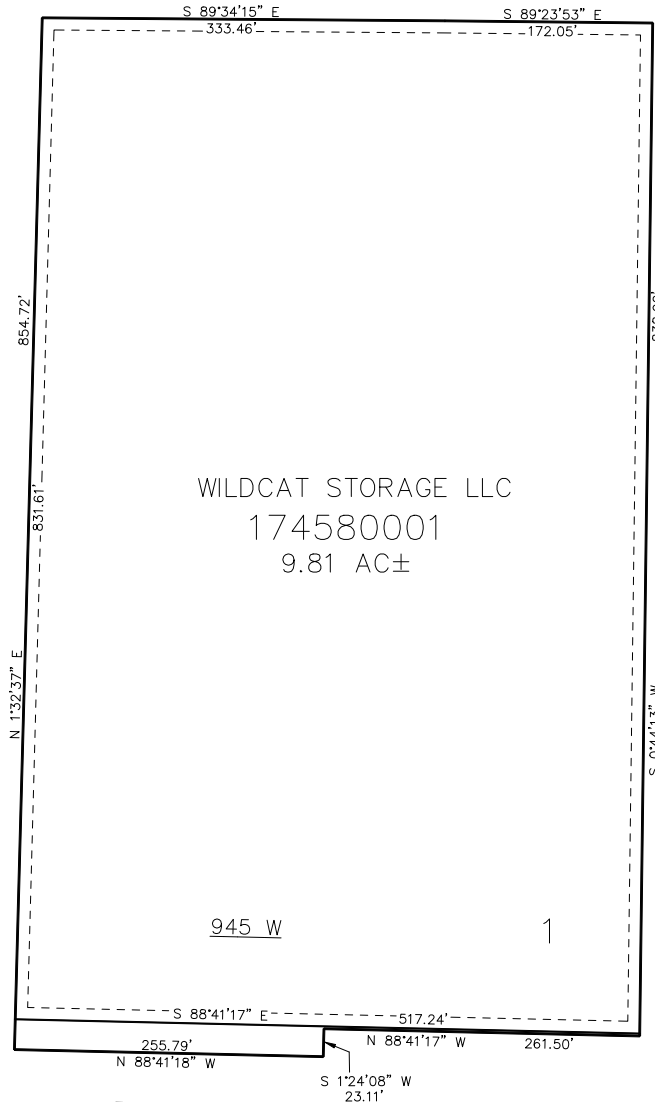
IN PLEASANT VIEW CITY

TAXING UNIT: 11

SCALE 1" = 80'

SEE PAGE 66

2700 NORTH ST



WILDCAT STORAGE LLC

174580001

9.81 AC±

SEE PAGE 66

SEE PAGE 66

10' UTILITY & DRAINAGE EASEMENTS EACH  
SIDE OF PROPERTY LINES AS INDICATED  
BY DASHED LINES EXCEPT AS OTHERWISE  
SHOWN.

2550 NORTH ST

FOR COMPLETE SURVEY DATA SEE  
ORIGINAL DEDICATION PLAT IN  
BOOK 95, PAGE 92 OF RECORDS.

SEE PAGE 66